

# ae album express



faster and more powerful





---

**User's Guide  
Album Express 8**

**[www.SPC-international.com](http://www.SPC-international.com)**

---

## Index

---

- 1.0 Getting started and System Requirement
  - 1.1 How to set the Preference of Album Express
  - 2.0 Setting up an Album Project
  - 2.1 Change or Modify Album / Page Size
  - 3.0 Starting a new Smart Project
  - 4.0 The work space of Album Express
  - 5.0 The 6 browsers of Album Express
  - 5.1 Photo
    - 5.1.1 How to add a photo to the current page
    - 5.1.2 The function of Auto Insert of the photos
    - 5.1.3 How to resize and rotate the inserted photo
    - 5.1.4 How to resize a photo object
    - 5.1.5 How to add some effect, shadow and rotate selected photo object
    - 5.1.6 How to edit, arrange and move photo object
    - 5.1.7 How to create Photo Object
    - 5.1.8 Editor Image
  - 5.2 Masks
  - 5.3 Frames
  - 5.4 Cliparts
  - 5.5 Backgrounds
  - 6.0 Text
  - 7.0 How to add your own creation - Clip Arts, Frames, Masks, Backgrounds, ready to use templates into Album Express
  - 7.1 How to add "Clip Arts"
  - 7.2 How to add Frames
  - 7.3 How to add Mask
  - 8.0 How to add/delete and arrange a page in the storyboard
  - 9.0 How to create and save new template
  - 10.0 How to resize the project
  - 11.0 How to convert the template in .psd
  - 12.0 Share Project
  - 13.0 Export Project
-

### 1.0 Getting started and System Requirement

It is very important to set the working environment of Album Express before we actually use it for making our Album pages.

- Set the minimum Resolution Monitor to 1024 x 768 pixels.

#### **SYSTEM REQUIREMENTS - WINDOWS PLATFORM**

- Operating System Windows 7 Service Pack 1 or higher
- 4GB RAM (Recommended 8GB)
- i3 or higher recommended

#### **SYSTEM REQUIREMENTS - MACINTOSH PLATFORM**

- Operating System Mac OS X 10.7 or higher
- 4GB RAM (Recommended 8GB)
- Intel Core Recommended
- HD 125 GB (Recommended SSD )

- Setting the Preference of Album Express.

#### **The instructions for installation an application onto Windows Vista and Windows 7 SP1 – 8 - 10**

The following procedures have got to be made in order to get to work software correctly:

##### **1.Parental protection.**

You should do following:

- \* go to the Control Panel;
- \* User Account and Parental Controls;
- \* User's Account;
- \* Change the settings of your User Account;
- \* take and drag the cursor down;
- \* click "OK".

##### **2. Run application as administrator.**

- \*Click with the right key of the mouse on the folder of application and set – Run as administrator.

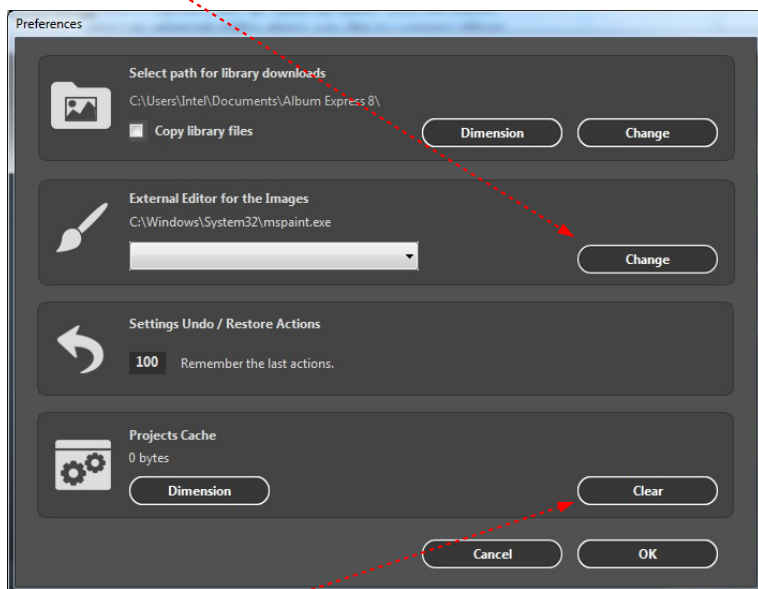
# User's Guide Album Express

---

## 1.1 How to set the Preference of Album Express

Open Album Express. Go File - Edit – Preferences. The window of the preferences opens. You can set the resolution and the number of the last actions which were saved in the memory.

To connect Album Express with an external editor click the button Change. Select an external editor which you like to connect Album Express with.



Use the button Clear to delete the files of temporarily saved projects.

---

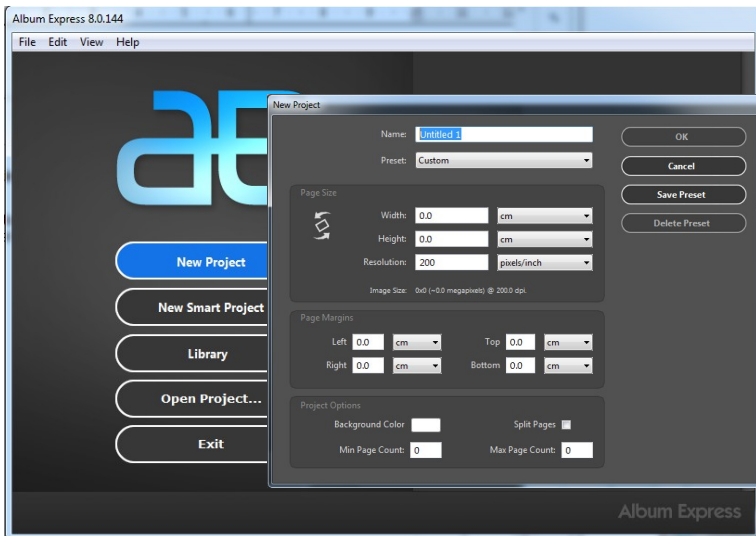
# User's Guide Album Express

---

## 2.0 Setting up an Album Project

It all starts here. These next few lessons will go over how to create and set up a new project in Album Express.

### New Project



Write name for your new project.

Choose an album size from the drop down menu: Preset

You can also create your own size writing Width/Height/Resolution in the Page Size box.

The box Page Margins – to set the save margins for the page.

You may also set the additional options for this project in the box Project Options:

to set the color of the background for all pages of the project, minimum and maximum number of the pages in the project, Split pages of this project.

All those new set options (Page Size, Page Margins and Project Options) can be saved as a Preset.

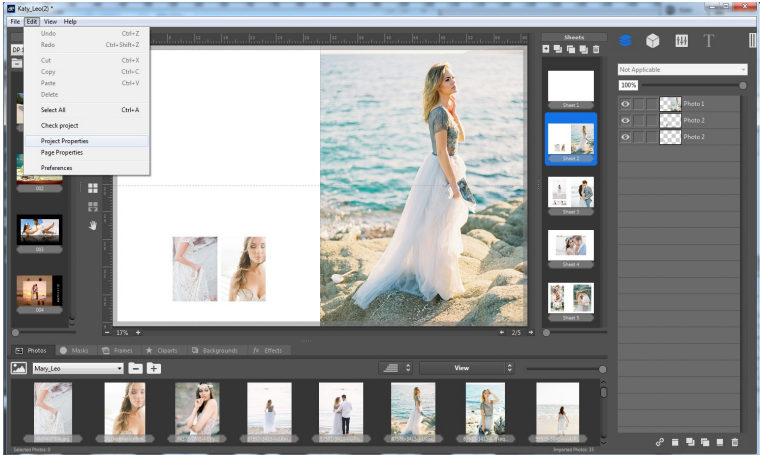
So your new preset will be added to the Menu Preset.

---

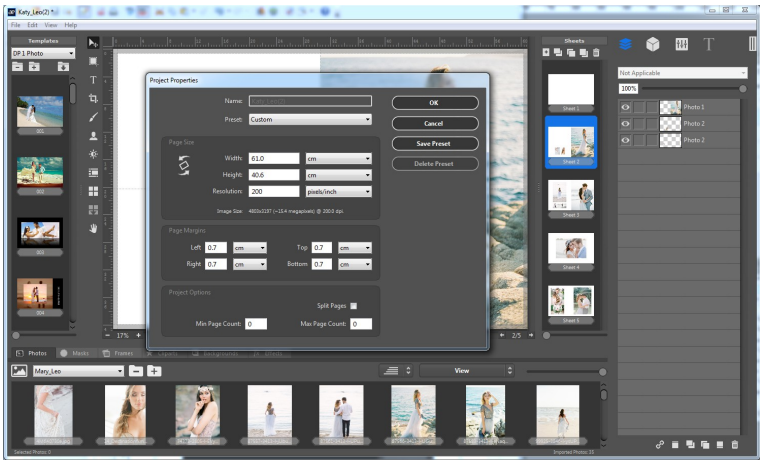
# User's Guide Album Express

## 2.1 Change or Modify Album / Page Size

To change or modify the album size, go to File – Edit – Project Properties



To set a new project size.



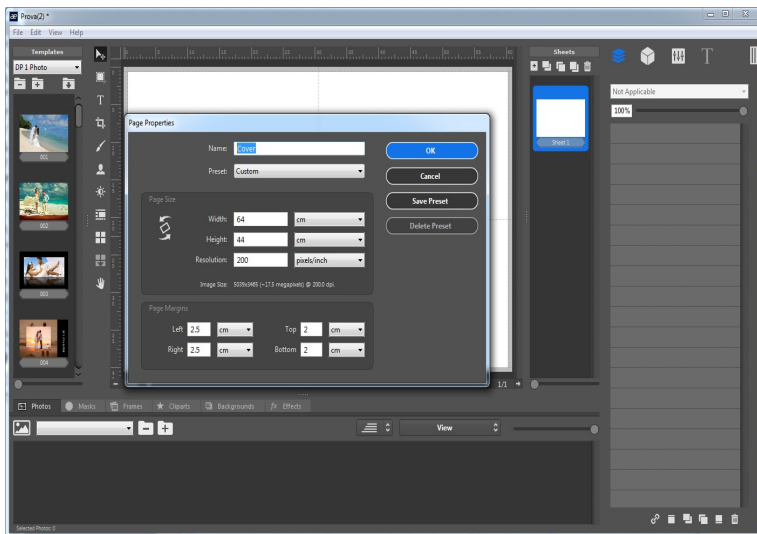
## User's Guide Album Express

---

To change or modify the page size, go to File – Edit – Page Properties.

Set the special size for only one (selected) page.

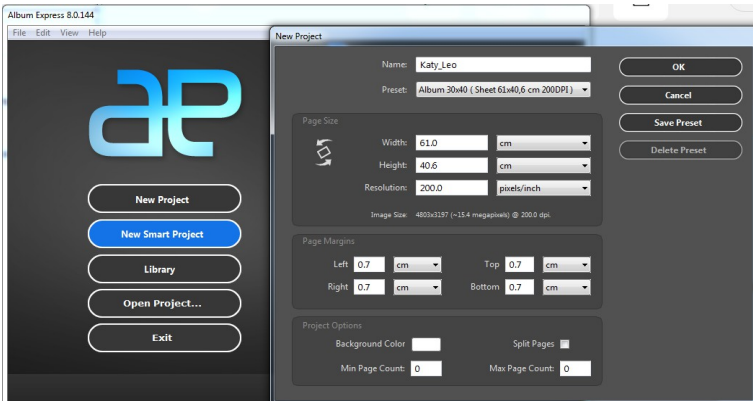
When you need to create the custom cover for your project rename the 1<sup>st</sup> page to cover and then input the custom dimensions and options.



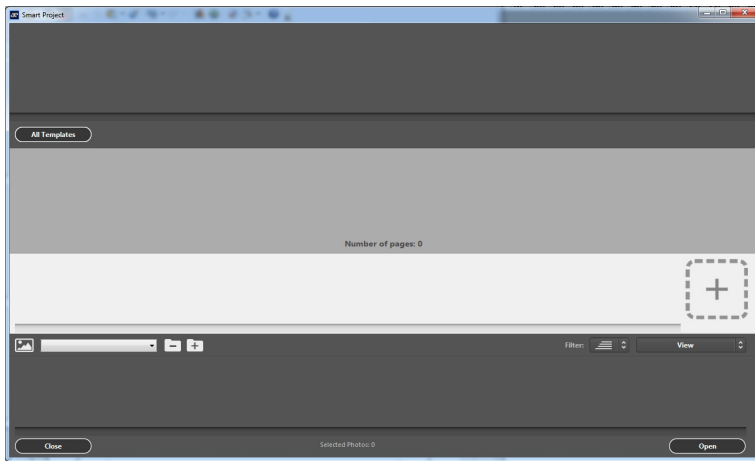
# User's Guide Album Express

## 3.0 Starting a new Smart Project

To start a new Smart Project write a name of the project, select a preset Album Size from the drop down menu Presets or create your own one – click ok.



The Smart project window opens.

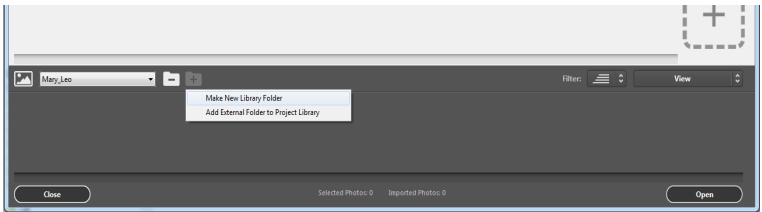


## User's Guide Album Express

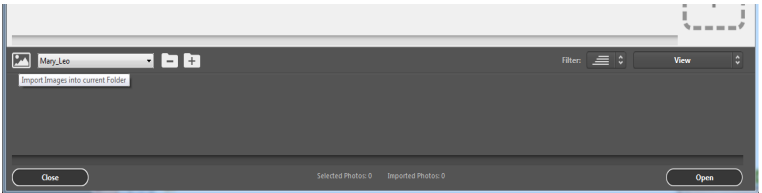
---

Add the folder photo:

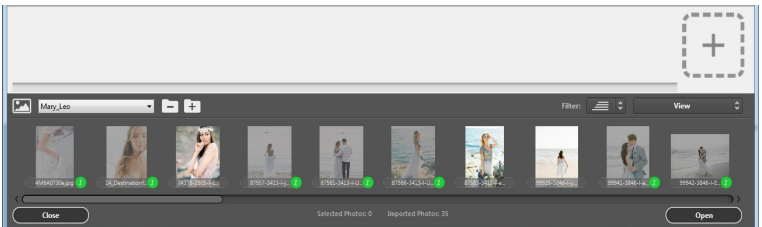
You can create a new folder photo in the library of Album Express. All selected photos will be imported to : Documents/Album Express 8 / Photo / Your folder photo



To import photo click the icon Import images into the shown folder



Please note: when you select: Add External Folder to the project Library you can use any folder photo from any external disk in the project. This folder photo won't be imported into the library of Album Express.

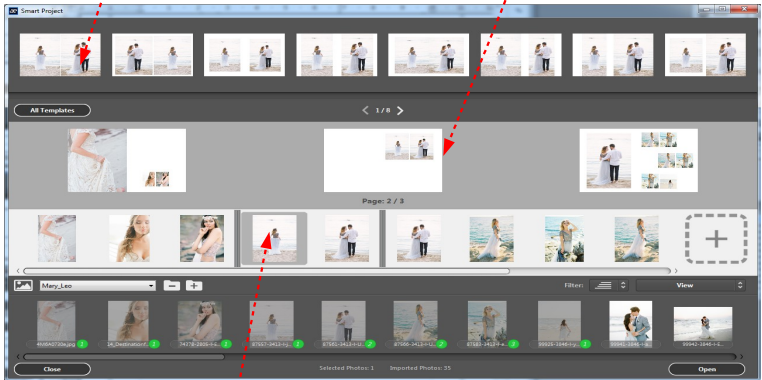


## User's Guide Album Express

---

Smart Template Library

Your Smart Project



Time line of the project

Select one or more photos, drag and drop the selected photos onto time line of the project.

The category of the Smart Templates (Clippings) will be opened on the top line of the window according to the number of the selected photos and their space orientation.

When you change the position of the photos by drag and drop or put a divider between the photos the new Smart Templates (Clippings) folder will be shown in the top line of the window.

When the Smart project is ready click the button Open in the right down corner of the window.

Your Smart project will be opened in the work space of Album Express. So you can continue to edit it using the editing tools and graphic libraries of Album Express.

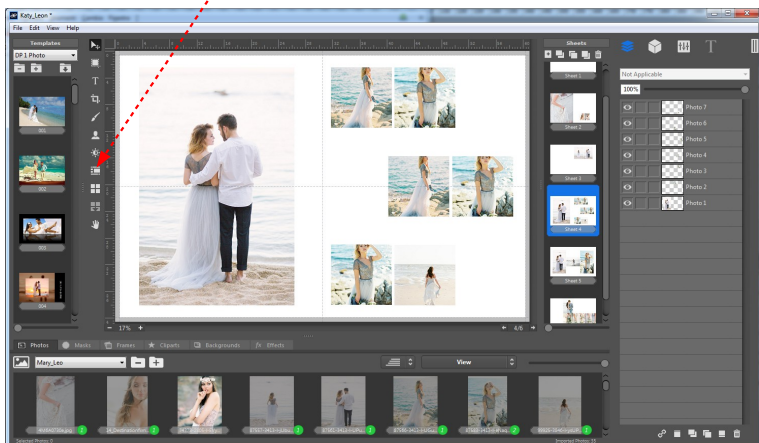
---

## User's Guide Album Express

---

Smart Project can also be opened from the work space of Album Express.

Smart Project



When the Smart project is done – click Open. The created Smart Project will be added to the opened project.

---

# User's Guide Album Express

---

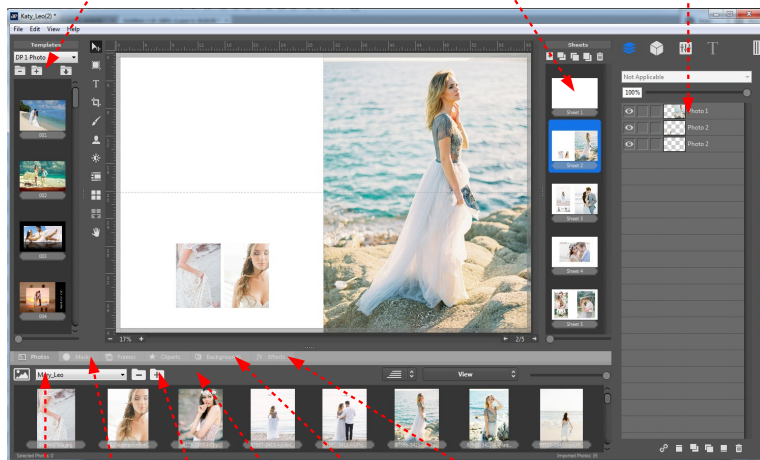
## 4.0 The work space of Album Express

Choose a folder of the template from the library of them. Double click on the thumbnail of one. It opens on the work space of Album Express.

Library of templates

Ready pages of the project

Layers of the objects on the opened page



Photo

Mask

Frame

Clipart

Background

Effects

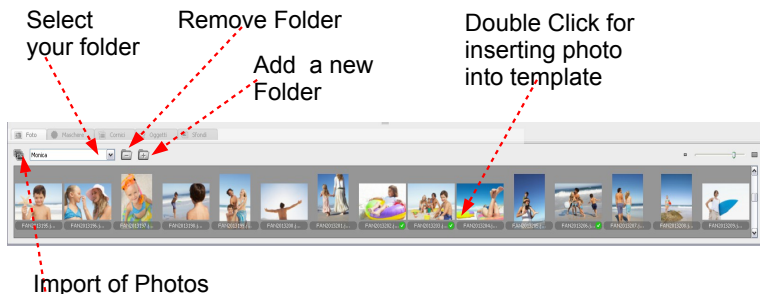
---

## User's Guide Album Express

### 5.0 The 6 browsers of Album Express

#### 5.1 Photo

Open Album Express. The section photo opens as default.

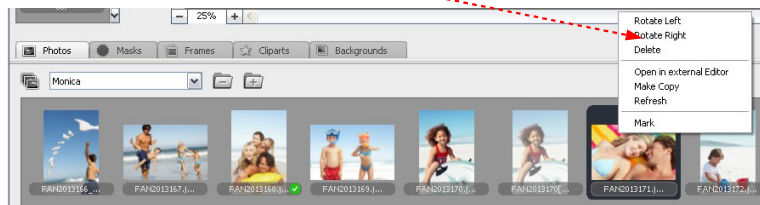


To import your photos into “Album Express” do following:

- \* click button Add a new folder;
- \* select that created folder;
- \* click the button Import of Photos;
- \* choose desired photo/photos and click OK.

The thumbnails of all imported photos will be created and showed in the window of the Photo Section.

Click on thumbnail of a photo by the right key of the mouse for opening this Menu



Choosing the voice Open in external Editor the photo will be opened in the external editor which Album Express was connected.

## User's Guide Album Express

### 5.1.1 How to add a photo to the current page

#### To insert the photo into photo object:

- Select a photo object on the template.

To select the photo object click on it in the opened template or select the layer of it in the window "Objects".

- Double click on the thumbnail of the photo.

It will be resized and inserted into selected photo object automatically.

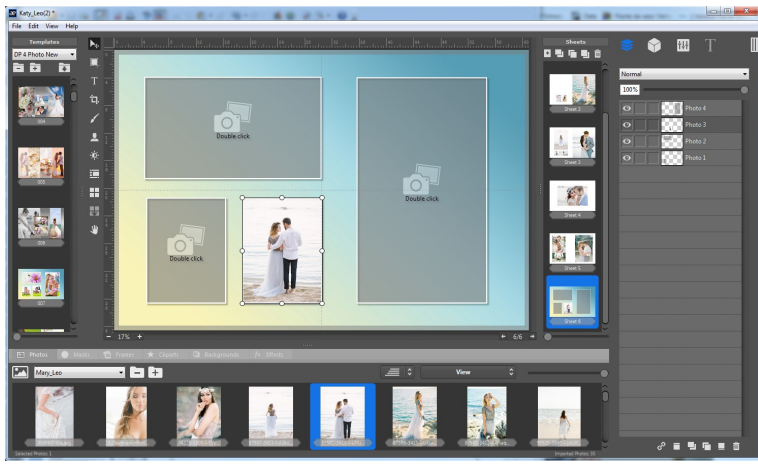
To insert a photo into photo object without importing it in Album Express double click on the photo object and choose the direction where desired photo is.

#### To insert the photo as a new photo object:

- take the thumbnail of the photo and drag it onto template;
- don't select any photo object on the template and double click of the thumbnail of the photo. It will be inserted on the template as a new photo object.

The new layer will be created in the window "Objects".

**Note:** changing the size of the photo object the inserted photo is never distorted.



## User's Guide Album Express

### 5.1.2 The function of Auto Insert of the photos

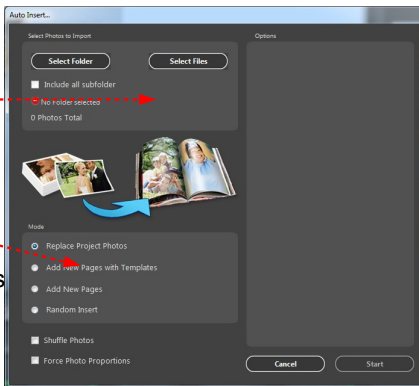
Go to File - Auto Insert...

The following window opens

1. Select photo files

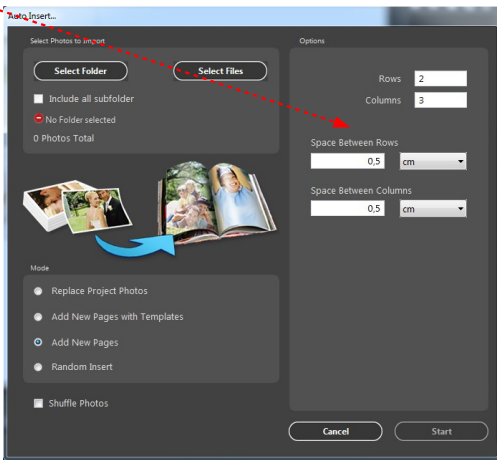
2. Choose mode:

- \* Replace Project Photos;
- \* Add New Pages;
- \* Add Pages with Templates
- \* Smart Insert



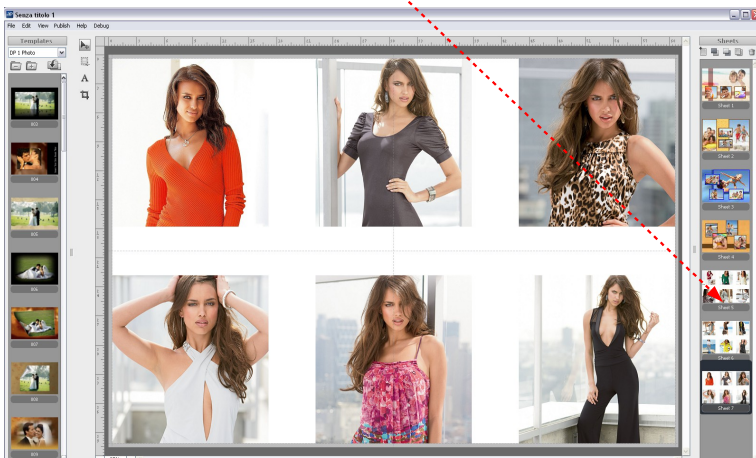
Choosing the mode Replace Project Photos all photos in the opened project will be substituted with the new selected ones.

Choosing the mode Add New Pages you can decide the number of the Rows and Columns and the space between them on every new page.



## User's Guide Album Express

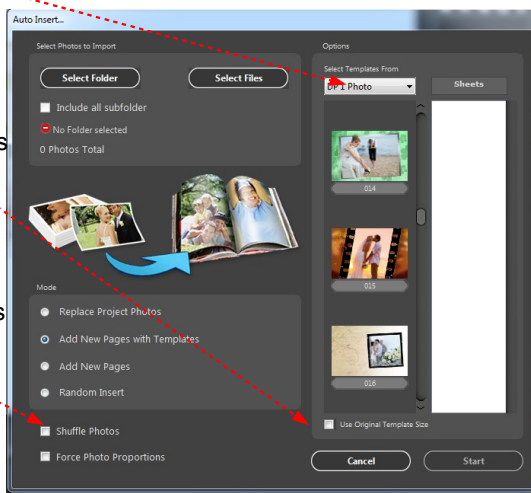
Click button Start and the new pages are created and the photos are inserted.



Choosing the mode Add New Pages with Templates you have to choose the folder of the templates and select desired ones.

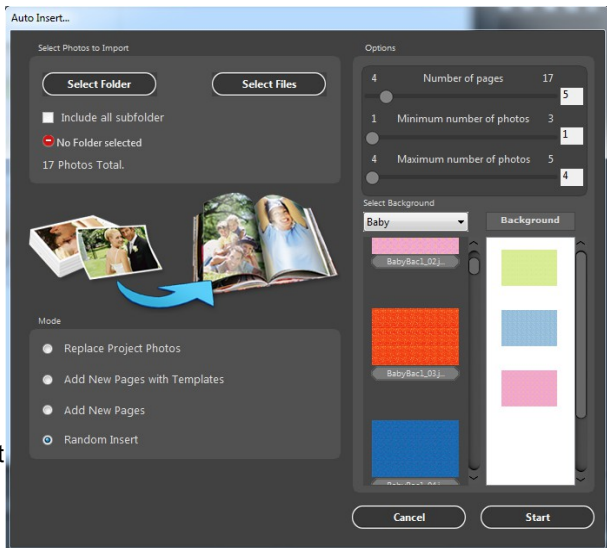
To use the original size of the templates click here

To insert the photos in Shuffle way click here



## User's Guide Album Express

### Smart Insert of the photos



Select  
Smart Insert

Select number of the pages, min and max number of the photos on the page.

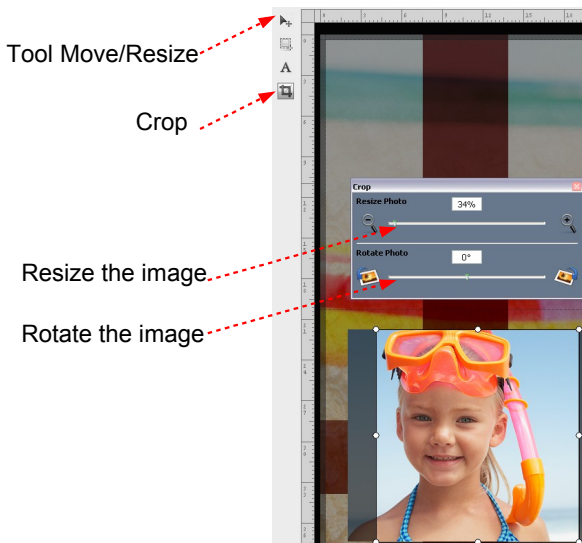
You can also select the backgrounds for your project.  
Start the Smart layout of your project.



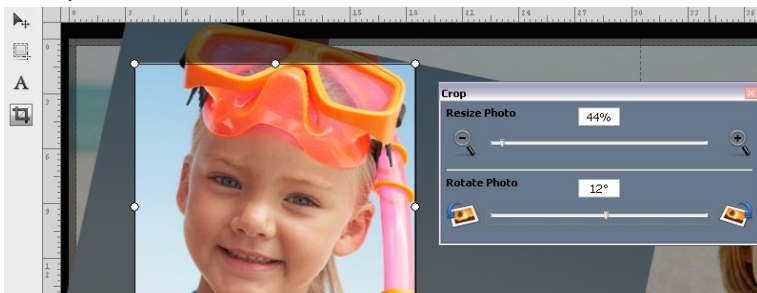
## User's Guide Album Express

### 5.1.3 How to resize and rotate the inserted photo

When you need to resize or rotate the inserted photo inside of the photo object you have to click the icon “Crop” on the left part of the template.



Using the Crop tools from the Crop window it is possible to resize the photo, rotate and move it.



When the work about the photo is finished click the icon Move/Resize in order to go back to the photo object.

## User's Guide Album Express

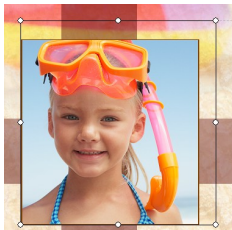
---

### 5.1.4 How to resize a photo object

The photo object can be resized in following ways:

1. Take and drag one corner of the photo object.

In this case only two sides of the photo object are expanded.



2. Hold the key SHIFT on the keyboard and take and drag one corner of the photo object.

In this case all four sides of the photo object are expanded.



3. Take and drag one side of the photo object.

In this case only one side of the photo object is expanded.



4. Hold the key SHIFT on the keyboard and take and drag one side of the photo object.

In this case two opposite sides of the photo object are expanded.



**Note:** The photo inside of the photo object is never distorted.

---

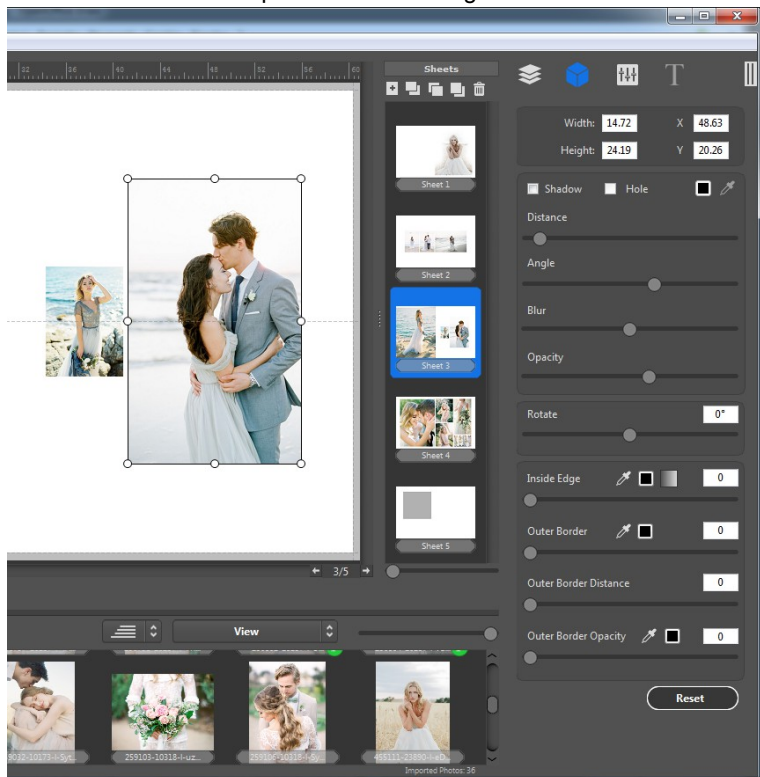
## User's Guide Album Express

### 5.1.5 How to add some effect, shadow and rotate selected photo object

Select a photo object clicking on it in the template or clicking on its layer in the window "Objects".

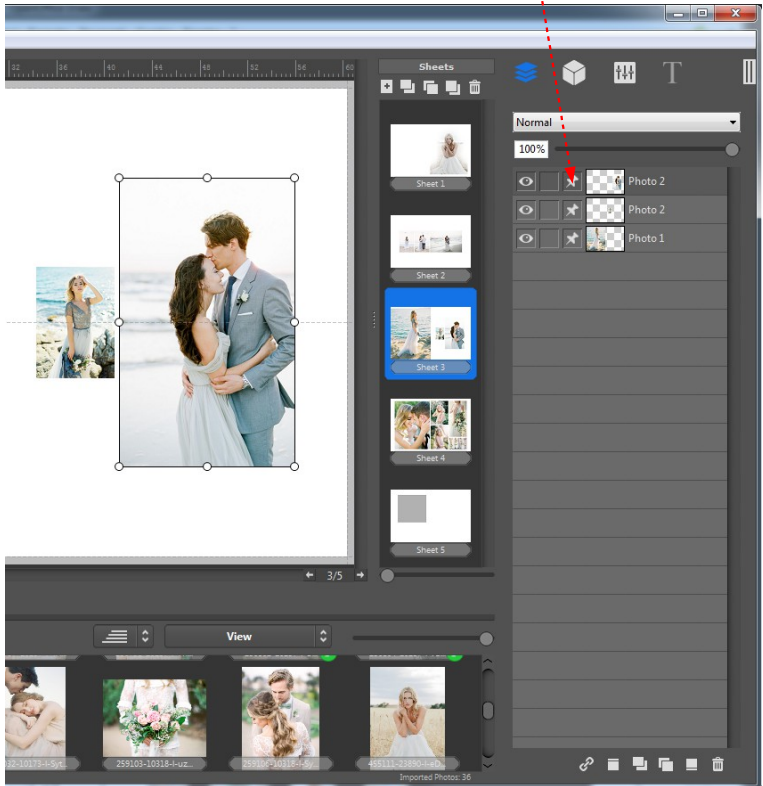
The window Property shows all values of selected photo object. Using the tools which are presented in the window Property it is possible to add the shadow, rotate, add an edge and apply some desired effect to the selected photo object.

**Note:** using the tools from window Property you can change the position and values only of the photo object. The position and the values of the inserted photo doesn't change!



## User's Guide Album Express

To block the position of the photo object click here



Now it isn't possible to move and to resize that photo object, but it is possible to change the property values using the tools from the window Property.

## User's Guide Album Express

When all modifies were done this photo object can be blocked provided that you click here



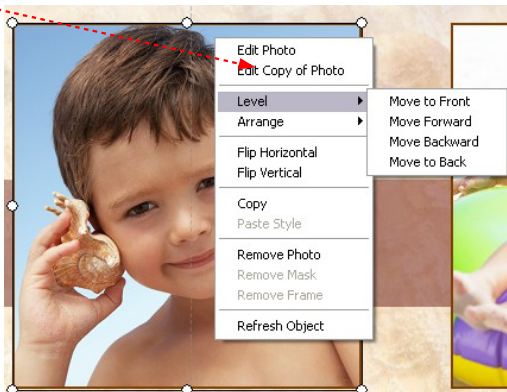
It isn't possible to do anything with photo object when the layer of the photo object was locked.

Click another time on the lock of that layer in order to unlock it.

## User's Guide Album Express

### 5.1.6 How to edit, arrange and move photo object

Click with the right key of the mouse on the photo object in order to open that menu:

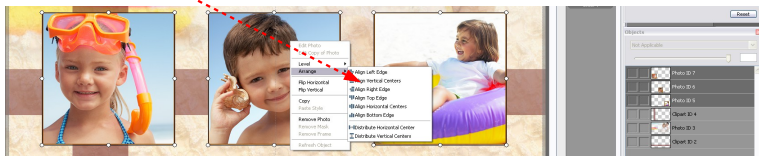


Choosing the voice Edit Photo the photo is opened in the external editor directly. After editing of the photo you return to Album Express and the old photo will be updated with the new.

Choosing the voice Edit Copy of Photo the copy of that photo is opened in external editor for editing. When you return to Album Express the old photo will be substituted with the new one and this new photo will be saved in the Photo folder near the old one.

Choosing voice Level become possible to change the layer position of the photo object.

To arrange the photo objects it is necessary to select all objects (hold the key Shift) which you need to arrange and click on the selected objects with the right key of the mouse. Choose the voice Arrange and choose the type of the arrangement from the submenu.

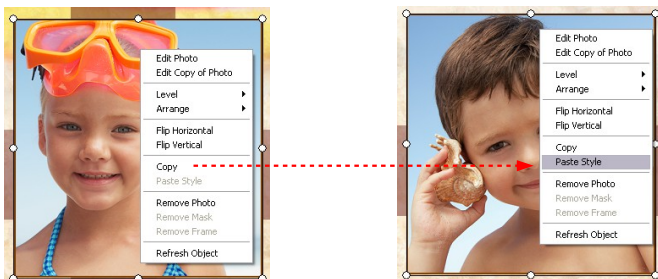


## User's Guide Album Express

---

Choosing the voice Flip Horizontal or Flip Vertical the photo object can be flipped on horizontal or vertical axes.

Choosing the voice Copy Style you copy the style of the selected photo object. Select some other photo object and choose the voice Past Style. The Style from one photo object will be applied onto other one.



Choosing the voice Remove Photo you can delete the photo from photo object.

Choosing the voice Remove Mask you can delete the mask from the photo object which was applied before.

Choosing the voice Remove Frame you can delete the frame from the photo object which was applied before.



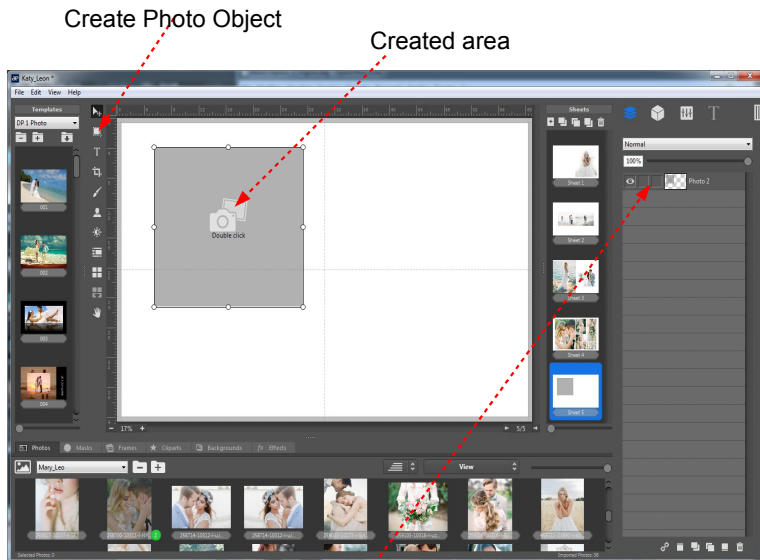
## User's Guide Album Express

---

### 5.1.7 How to create Photo Object

**For creating a photo object in the current page:**

1. Select the tool "Create Photo Object" clicking on it by the left key of the mouse.
2. Select the area into template where you want to insert photo.



The layer with the photo object will be created in the Layers window automatically.

Double click on a thumbnail of a photo to insert it into created photo object. The photo will be inserted and resized automatically.

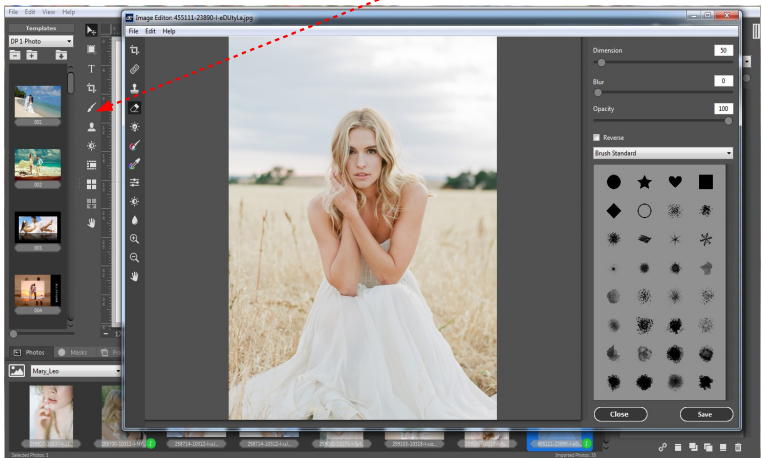
To delete the photo object it is necessary to select it clicking on by the left key of the mouse or select the layer of this photo object in the Layer window. It is possible to delete it using the icon Trash in the Layer window or push the key Delete from the Keyboard.

---

## User's Guide Album Express

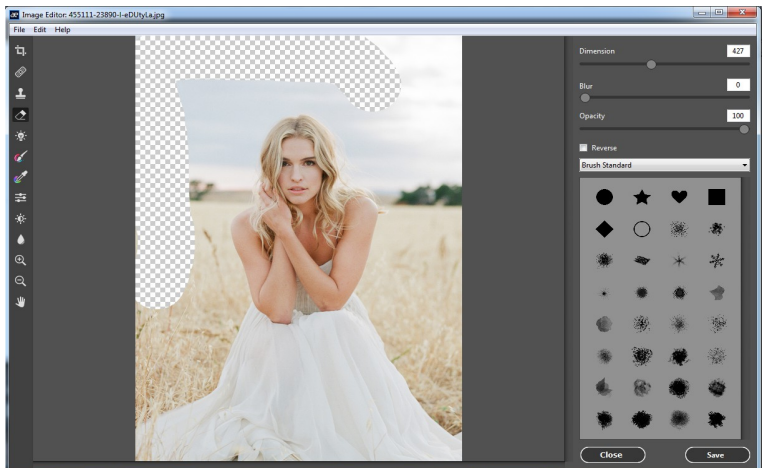
### 5.1.8 Editor Image

To open Editor Image click the icon Brush.



There are following functionalities:

Crop image, Delete skin imperfection, Timbr, Eraser, Color Correction, Edge Blur.

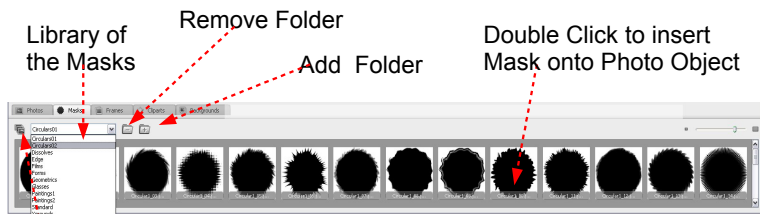


## User's Guide Album Express

---

### 5.2 Masks

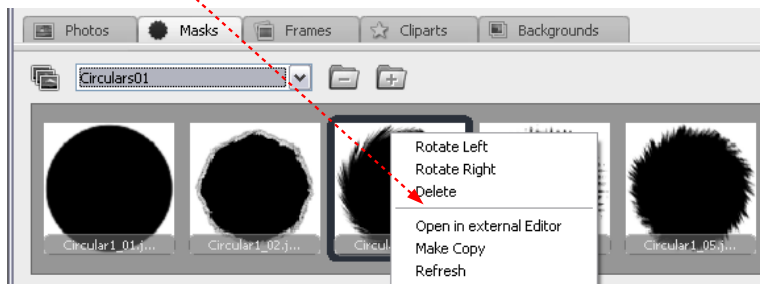
The section Masks includes the different types of the masks ready for using.



#### Import Masks

To apply a mask on the selected photo object double click on a thumbnail of mask. The mask applied onto selected photo object automatically.

Click on thumbnail of a mask by the right key of the mouse for opening this Menu



This menu allows us:

- \* rotate it to left (- 90);
  - \* rotate it to right (+ 90);
  - \* delete it from the folder;
  - \* open it with the External Editor which was connected with Album Express;
  - \* create the copy of it;
  - \* update the thumbnail of the mask which was modified.
-

## User's Guide Album Express

### 5.3 Frames

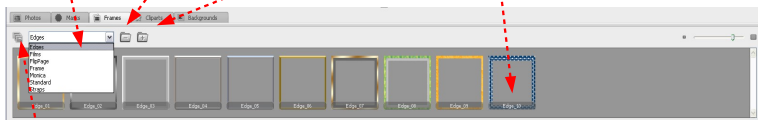
The section Frames includes the different types of the frames ready for using.

Library of frames

Remove Folder

Add Folder

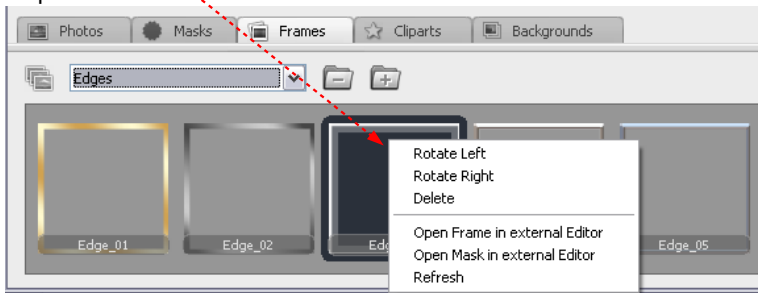
Double Click to insert Frame onto Photo Object



Import frames

To apply a frame on the selected photo object double click on a thumbnail of a frame. The frame will be inserted automatically.

Click on a thumbnail of a frame by the right key of the mouse to open this Menu



This menu allows us:

- \* rotate it to left (- 90);
- \* rotate it to right (+ 90);
- \* delete it from the folder;
- \* open Frame with the External Editor which was connected with Album Express;
- \* open Mask with the External Editor which was connected with Album Express;
- \* update the thumbnail of the frame which was modified.

## User's Guide Album Express

### 5.4 Cliparts

The section Cliparts includes the different types of the cliparts ready for using.

Library of the cliparts

Remove Folder

Add Folder

Double Click for inserting Clipart into template

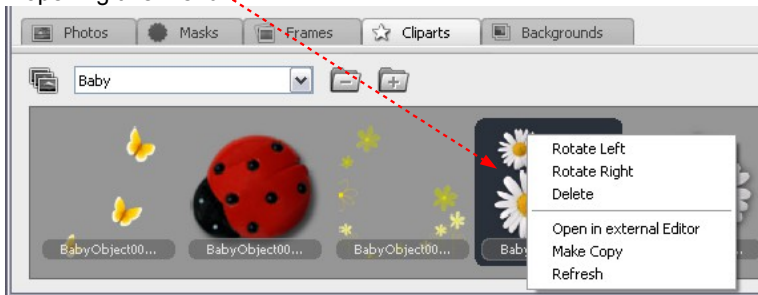


#### Import Cliparts

To apply a clipart on the selected photo object double click on a thumbnail of a clipart.

To delete the clipart from the template select clipart and click the key Delete from the keyboard.

Click on thumbnail of a clipart by the right key of the mouse for opening this Menu



This menu allows us:

- \* rotate it to left (- 90);
- \* rotate it to right (+ 90);
- \* delete it from the folder;
- \* open it with the External Editor which was connected with Album Express;
- \* create the copy of it;
- \* update the thumbnail of the clipart which was modified.

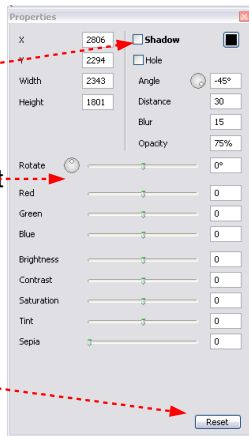
## User's Guide Album Express

Double click on the thumbnail of the clipart to apply it onto template.  
Take and drag on some corner to resize the clipart proportionally.  
Take and drag on some side to resize the clipart not proportionally.  
Click with the right key of the mouse on it to change the level position of it.



It is possible to change the level position of the objects from the Level window directly. Select the layer of the object and use the buttons down in this window.

It is possible to add a shadow to the clipart using the Properties window.



It is possible to edit and rotate selected clipart using the function in the Properties window.

Push the button Reset when you need to turn to the original values of the clipart.

## User's Guide Album Express

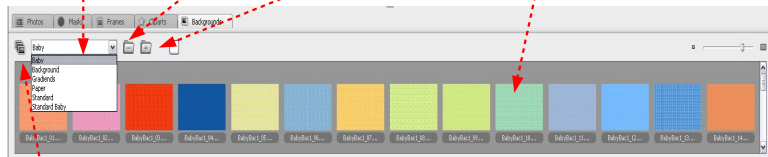
### 5.5 Backgrounds

The section Backgrounds includes the different types of the backgrounds ready for using.

Library of the backgrounds

Remove Folder  
Add Folder

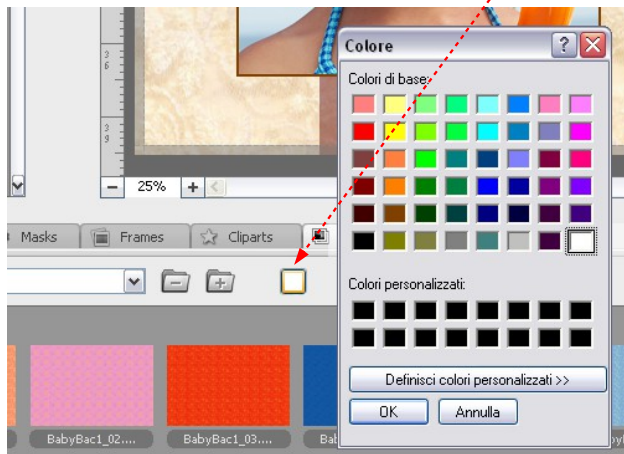
Double Click to insert  
Background into Template



Import Backgrounds

To apply a background on the template double click on a thumbnail of a background.

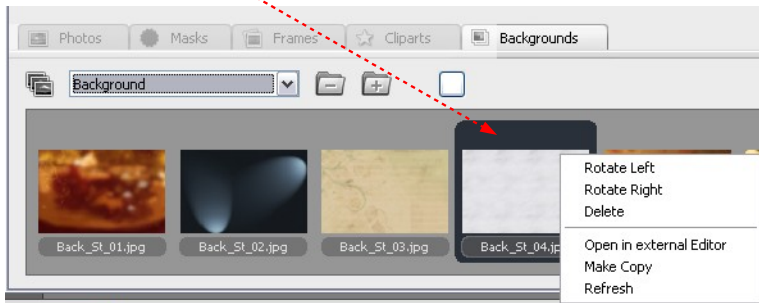
**Note:** to apply coloured background click on the button “Colour” and choose a desired colour.



## User's Guide Album Express

---

Click on a thumbnail of a background by the right key of the mouse for opening this Menu.



This menu allows us:

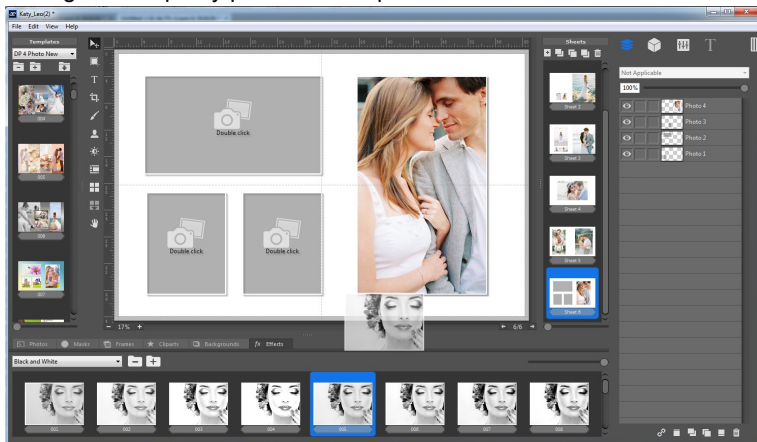
- \* rotate it to left (- 90);
  - \* rotate it to right (+ 90);
  - \* delete it from the folder;
  - \* open it with the External Editor which was connected with Album Express;
  - \* create the copy of it;
  - \* update the thumbnail of the background which was modified.
-

## User's Guide Album Express

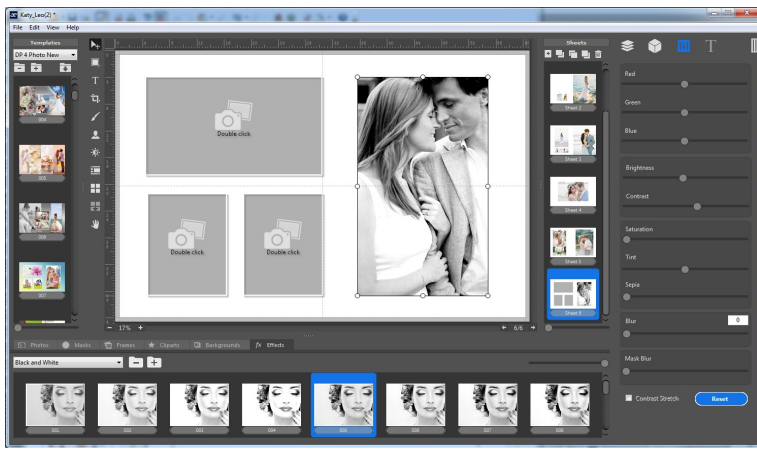
### 5.6 Effects

The section Effects includes the different types of the Presets ready for using.

Drag and drop any preset on the photo.



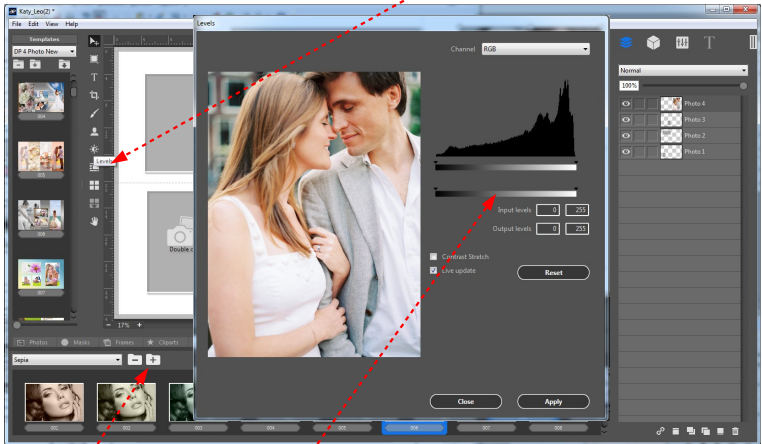
To remove Effect press **Ctrl + z**  
It may be also reseted in the Editor window.



# User's Guide Album Express

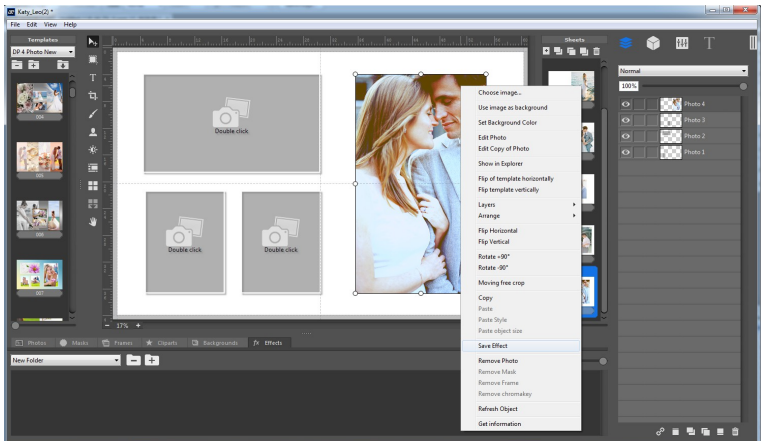
## How to create and save own preset

Select the photo object – click the icon **Levels**



Create an effect.

Create a new folder and save this new effect clicking with the right key of the mouse on the photo – Save Effect.





## User's Guide Album Express

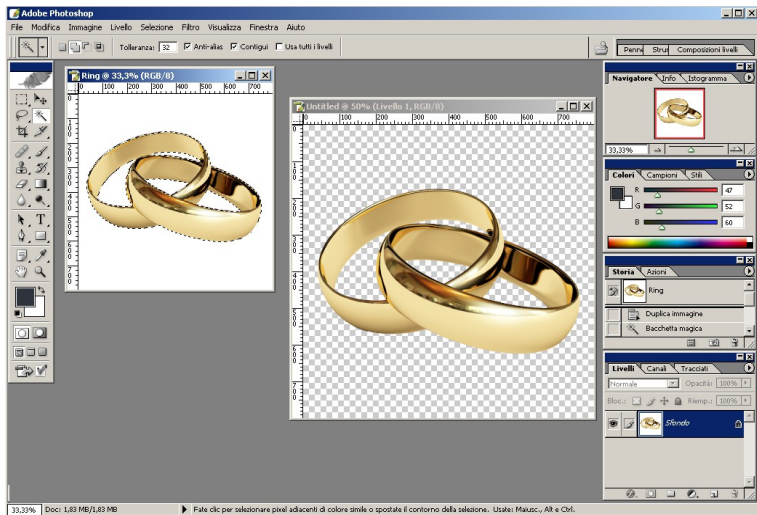
### 7.0 How to add your own creation - Clip Arts, Frames, Masks, Backgrounds, ready to use templates into Album Express

#### 7.1 How to add "Clip Arts"

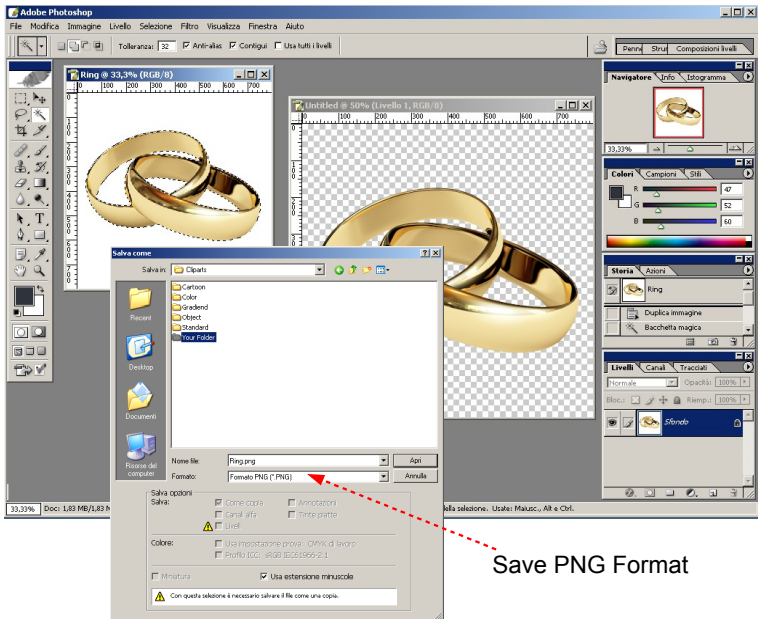
To add a clipart into "Album Express " as the 1st it is necessary to delete the space around the image which you want to use as an object of "Clipart".

Please follow these steps in Adobe Photoshop:

1. Open the image which you want to use as a object of clipart in Adobe Photoshop.
2. Select the desired area by tool "Lasso".
3. Copy the selected area. (Ctrl + C)
4. Open a new canvas with a transparent background.  
Set resolution 300 DPI.



# User's Guide Album Express



Save PNG Format

5. Paste the selected object into the new canvas. (Ctrl + V).
6. Go to Select Menu > Load Selection.
7. Click OK.
8. Apply Quick Mask. Click on the Edit in Quick Mask Mode Tool from the tool bar.  
Shortcut key is Q.
9. Save the image: File menu > Save As
10. In the activated Save As Dialog box,  
Save in:

**Documents/AlbumExpress/Cliparts/Your Folder.**

**Note:** Save it as PNG file format and with Alpha Channels

11. Click Save.

## User's Guide Album Express

---

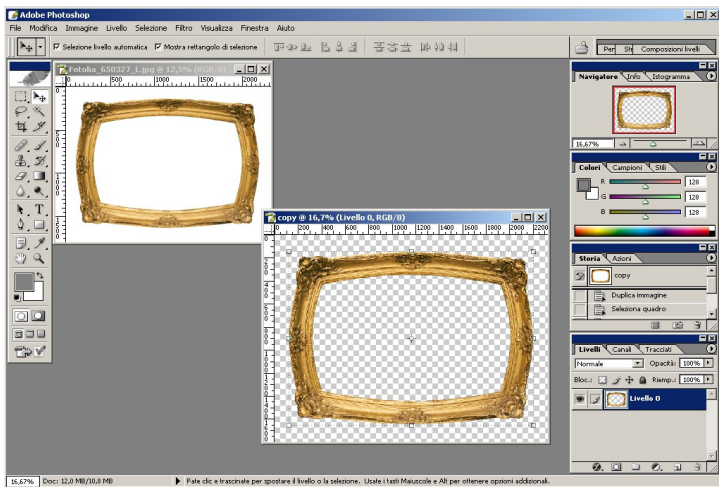
### 7.2 How to add Frames

To add a frame into Album Express as the 1st it is necessary to delete the space around the image which you want to use as a frame in Album Express.

Please follow these steps in Adobe Photoshop:

1. Open the desired frame or your creation.
2. Select the frame with the help of Marquee tool.
3. Invert the selection. Select menu > Inverse. (Ctrl +Shift+I)
4. Copy the selected area. (Ctrl + C)
5. Open a new canvas with a transparent background.  
Set resolution 300 DPI.
6. Paste the selected frame into the new canvas. (Ctrl + V).
7. Go to Select Menu > Load Selection.
8. Click OK.
9. Apply Quick Mask. Click on the Edit in Quick Mask Mode tool from the tool bar. Shortcut key is Q.
10. Save the image: File menu > Save As
11. In the activated Save As Dialog box, Save in

**Documents/AlbumExpress/Frames/SampleFrame/  
Sampleframe\_overlay.png**



**Note:** Save it as PNG file format and with Alpha Channels.

---

## User's Guide Album Express

---

12. Click Save.

**Important Note:** You must also save the same frame again in JPEG format!

Please follow these steps in Adobe Photoshop:

13) Select the Canvas with the frame, which you have opened previously. Copy it.

**Note:** You will get the previous selection.

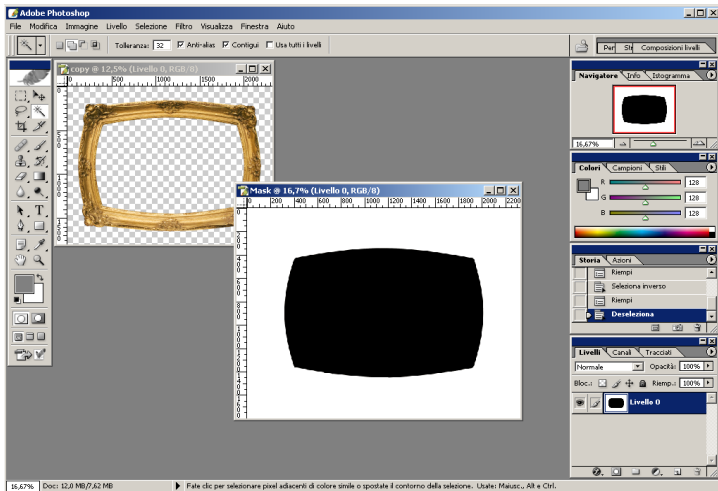
14) Apply solid black colour to the selection so that frame is covered by the black colour. (Set the foreground colour, black) - Edit Menu > Fill. Foreground colour

15) Save the image, File menu > Save As

16) In the activated Save As Dialog box, Save in

**Documents/AlbumExpress/Frames/SampleFrame/  
Sampleframe\_Mask.jpg**

17) Click Save.



**Note:** Save it as the file JPEG format with the same file name.

---

## User's Guide Album Express

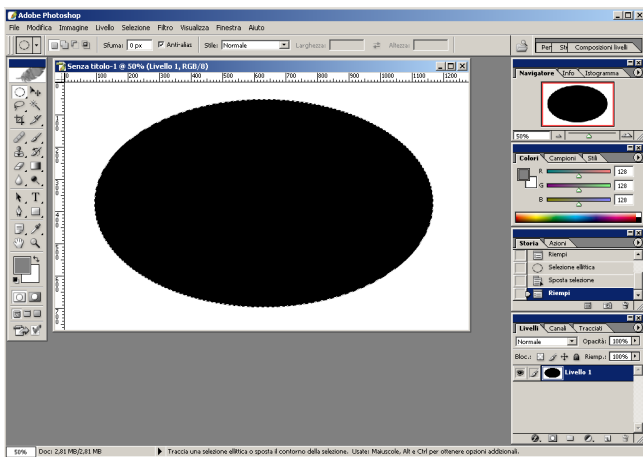
---

### 7.3 How to add Mask

To add your own Mask in Album Express you have to keep the desired portion as Black (colour), where the image has to be seen and the border/outline of the Mask must be White.

Follow these steps to create a Mask in Adobe Photoshop and add it into Album Express:

1. Open the new canvas.  
Here 1500x1500 Pixels, Resolution and set Mode-Grayscale in the New Canvas Dialog box and set background Black.
2. Trace an Oval in the new canvas with the Elliptical Marquee tool.
3. Invert the selection. Select Menu > Inverse (Ctrl+Shift+I)
4. Apply solid black colour to the selection so that the selection is filled by the White colour. (Set the foreground colour, black) - Edit Menu > Fill.
5. Save the image, File menu > Save As
6. In the activated Save As Dialog box, Save in **Documents/AlbumExpress/Mask/YourFolder/Mask.jpg**
7. Click Save.



**Note:** Save it as JPEG file format.

---

## User's Guide Album Express

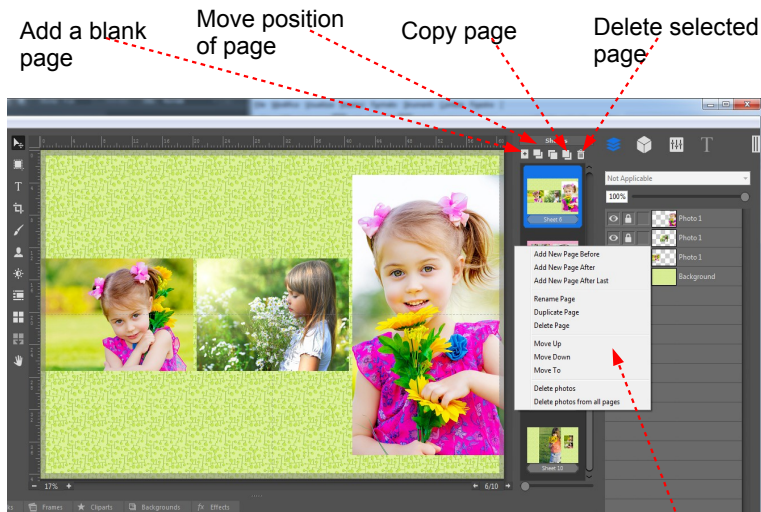
### 8.0 How to add/delete and arrange a page in the storyboard

To change the position of ready page use the buttons “Send backward page” and “Bring forward Page”

To add a blank page click on the button “Add a blank page”.

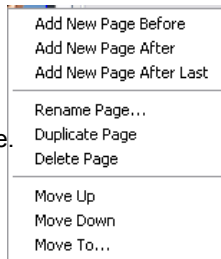
To rename a ready page click on it by the right key of the mouse and type a new name in the opened window.

To delete the ready page select it from ready pages. It opens on the work space. Click the button “Delete selected Page”



It is possible to change the position of the pages using that scroll menu:

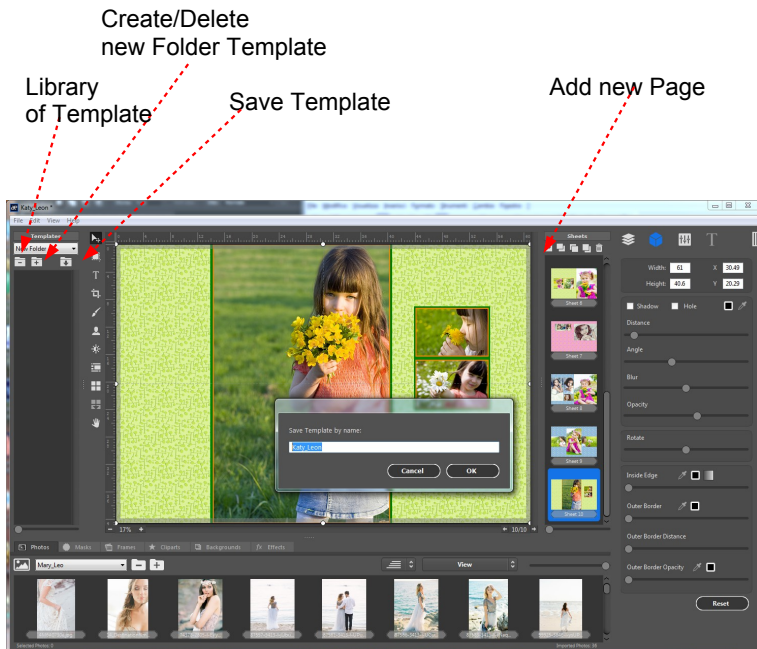
- \* select desired page;
- \* click with the right key of the mouse on the thumbnail of it;
- \* choose the desired action/position for this page.



## User's Guide Album Express

### 9.0 How to create and save new template

1. Open a new blank page clicking on the button Add a new Page.
2. Click the button "Create Photo Object" and and create one or more of them on the blank page.
3. Using the libraries of Album Express add masks, cliparts, frames, effects and background.
4. Create a new folder into "Library of Templates" clicking the button "Create a new folder of templates".
5. Write a name for new folder.
6. Open it.
7. Click the button Save Template
8. Type a name of the template;
9. Click OK.

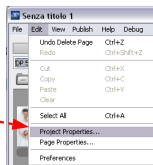




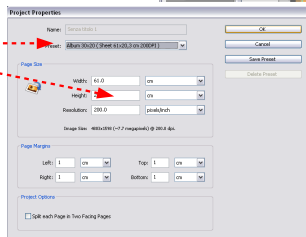
## User's Guide Album Express

### 10.0 How to resize the project

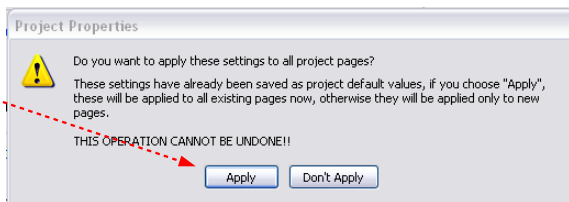
When you need to resize the project go to File – Edit - Project Properties...



Choose the size from the Custom Sizes or type your desired size here

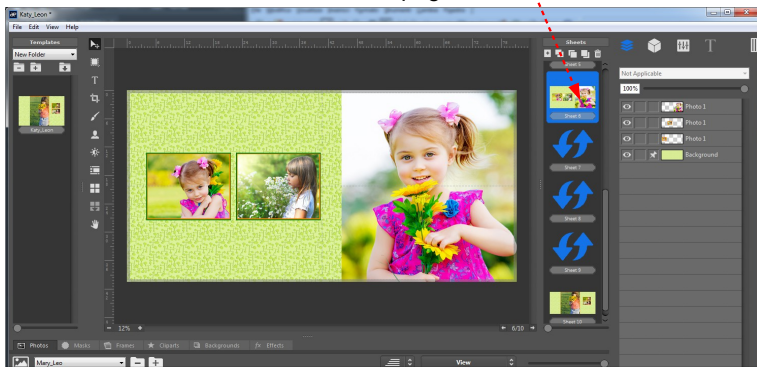


Click Apply



**Note:** The project was resized. All objects and photos were resized proportionally.

To create the new thumbnail of the page click here



---

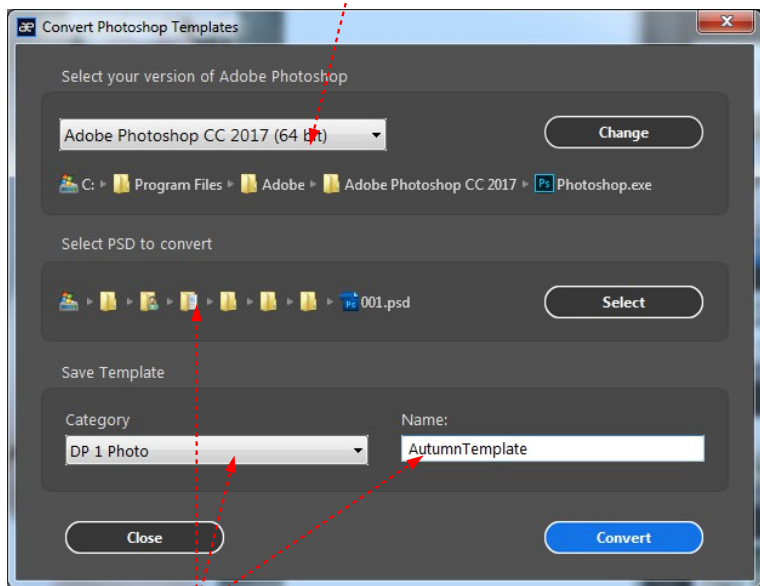
## User's Guide Album Express

### 11.0 How to convert the template in .psd

To convert any template in .psd to fully layered format for Album Express go to:

File – Convert Photoshop Template

Select your version of Photoshop



Select any template in .psd format

Select any folder of the Templates where you need to save it and write any name for this template.

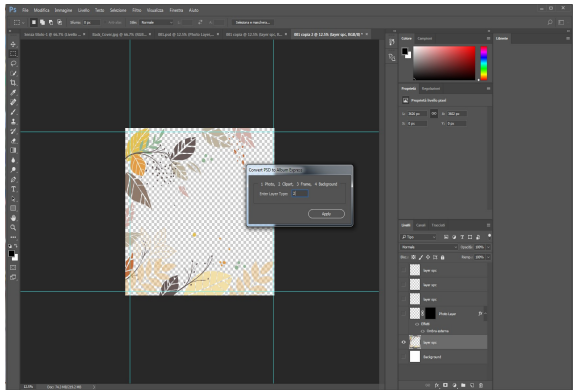
Press Convert.

---

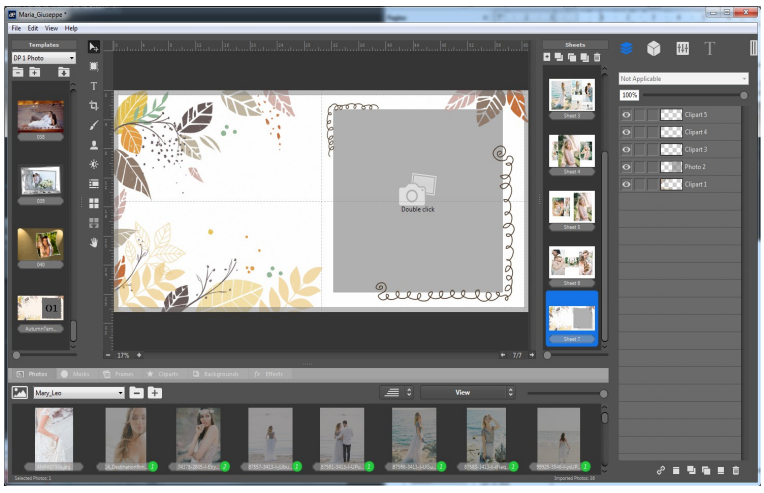
## User's Guide Album Express

Every elements of that template will be opened in photoshop – you should only assign the layer number for showing element:

- Photo object – 1
- Clipart – 2
- Frame – 3
- Background - 4



When the conversion is done you find that template in the selected folder of the templates of Album Express:  
Documents/Album Express 8/Templates/Selected Folder

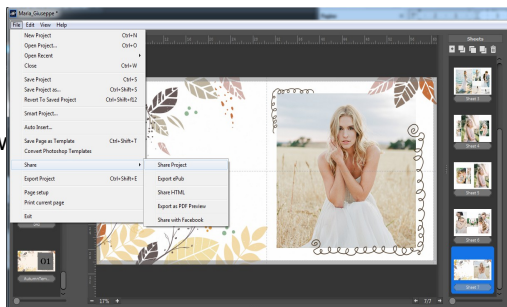


# User's Guide Album Express

## 12.0 Share Project

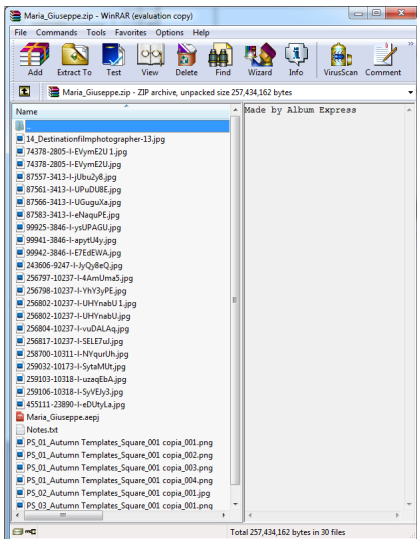
File – Share:

Share Project  
Export ePub  
Share HTML  
Export as PDFPreview  
Share with Facebook



**File – Share: Share Project** the project will be exported to .zip file  
So this project can be opened on any other computer:

- \* unzip file;
- \* create a new folder;
- \* select and drag/drop all items in that new folder;
- \* open Album Express;
- \* open the project file .aepj

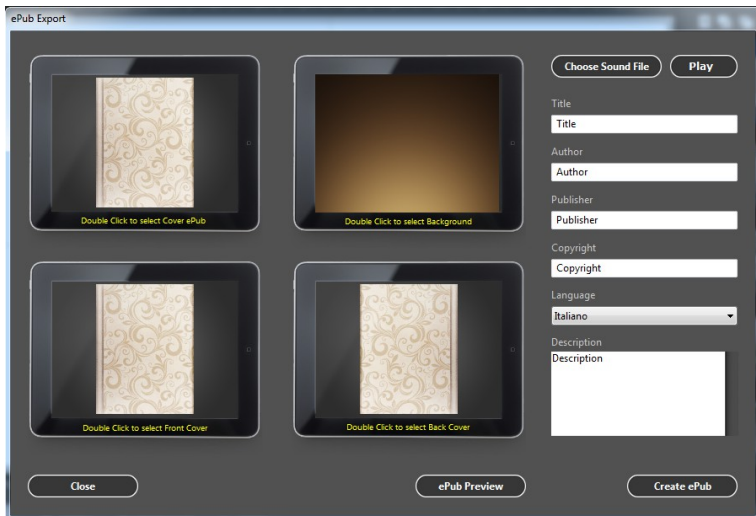


It is possible to transfer the project from the computer to another one to continue to work on it.

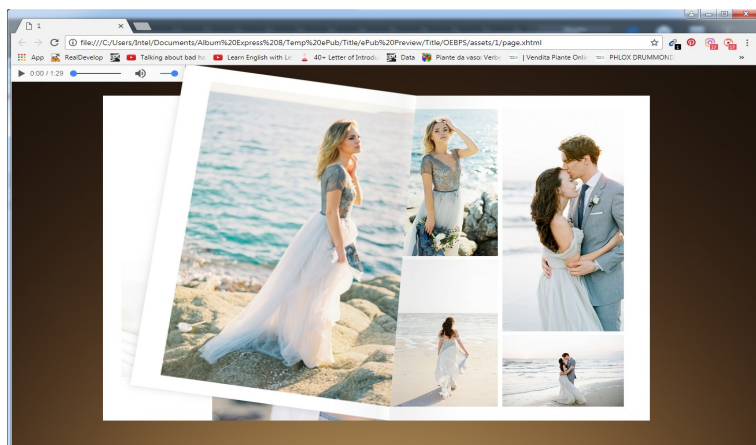
## User's Guide Album Express

### File – Share: ePub Export

You can add the Cover and background image, title, Sound track and others.



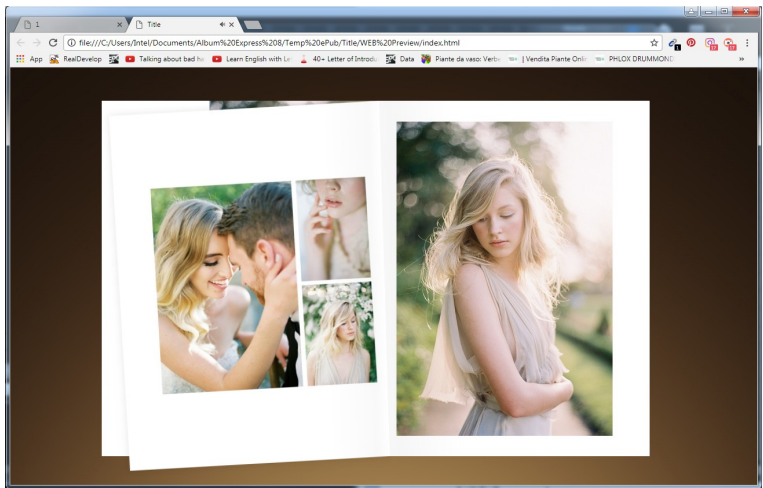
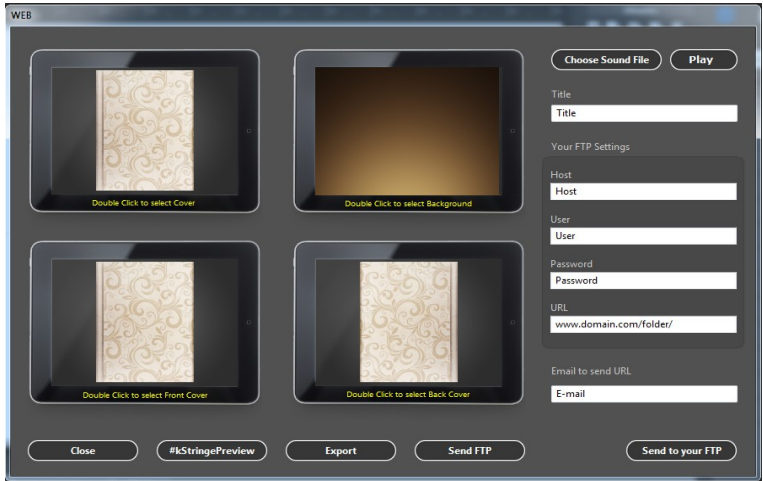
Click to ePub Preview.



## User's Guide Album Express

### File – Share: Share HTML

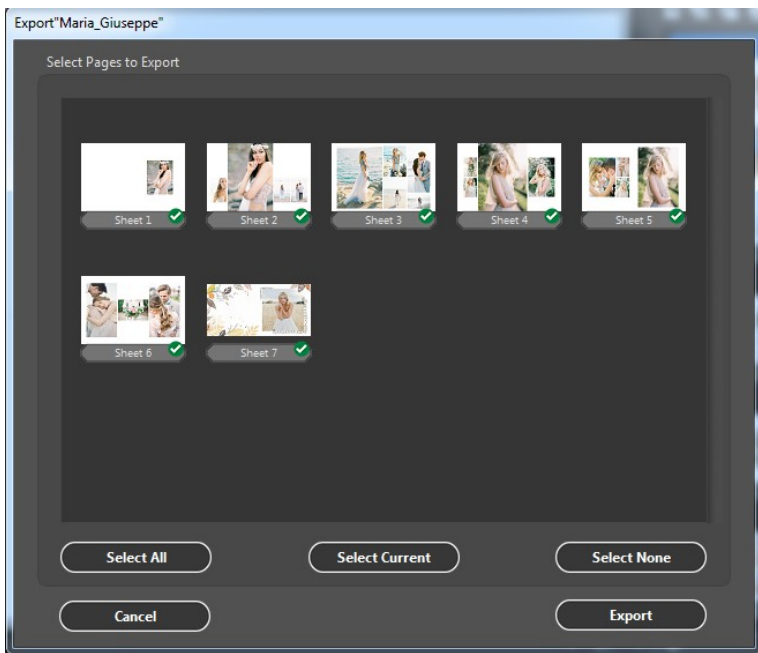
You can add the Cover and background image, title, Sound track and others to send it via ftp.



## User's Guide Album Express

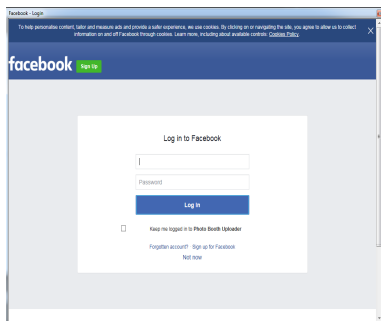
### File – Share: Export PDF Preview

Select the pages to export – Export.



### File – Share: Share with Facebook

Login to share the project.

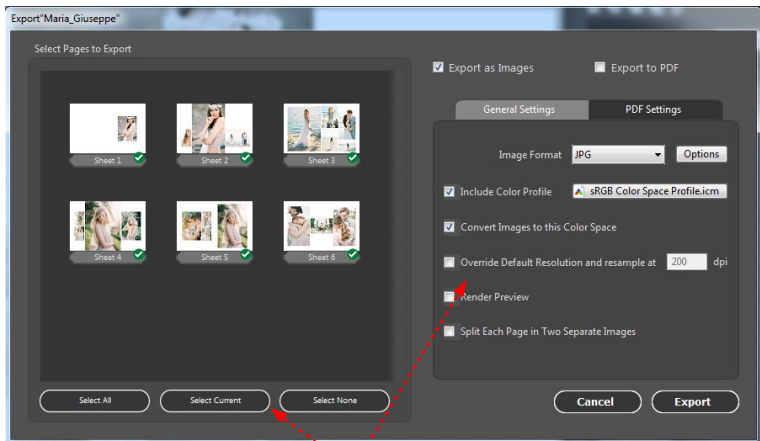


## User's Guide Album Express

### 13.0 Export Project

1. Select menu File
2. Save project as...
3. Menu File - Export project.

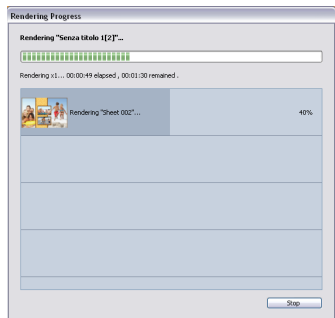
The following window opens:



Here it is necessary to select:

- \* all pages or any one;
- \* format of the exported file;
- \* split pages;
- \* export preview.

4. Click the button export.
5. Select a folder of the destination.



The application divides all available memory for 1.5 GB during the rendering . For example: the memory is 15GB : 1.5 GB. In this case 10 rendering processes (10 pages are exporting) are starting in the same time. The time of the rendering is reduced and the application doesn't crash.



faster and more powerful

